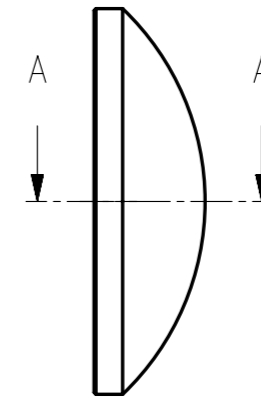


NOTES:

- 1) Optical surfaces are spherical.
- 2) Pitch polish to Test Plate within  $\pm 0.5$  fringe @ 633 nm.
- 3) Document and report all surface figures.
- 4) Measure all radii by interferometer and report.
- 5) Surface roughness 1nm or better.
- 6) Surface quality: 60-40 (MIL-O-13830A).
- 7) Wedge: Less than 20 micron edge thickness difference before bevel.



1.0 x 45°  
Edge ground #400GRIT SECTION A-A

N/H: 3200AD0000		U/O: 32000		UNQUOTED TOLERANCES ( $\pm$ )		TITLE :	
				DIMENSION (Upper inclusive)		TOL	
				0 to 6 - 0.1 6 to 30 - 0.2 30 to 150 - 0.4 150 to 750 - 0.8 Above 750 - 1.6		PART NUMBER :	
OJS	DOD	KN	RSS_CoII	11/10/2013	G	<b>3120AD0007_G</b>	
DRAWN	CHECKED	APPROVED	ECR No.	DATE	REV		
				CaF2 - Customer supplied		MATERIAL	SCALE 1:1
				ONE OFF		QUANTITY	SHEET 1 OF 1
				NONE		TREATMENT	ISO STANDARD, mm
						A3	



Copyright exists in this drawing and all information contained therein in terms of copyright law. This drawing is only to be used for the purpose for which it was supplied to the secondary party and may not be reproduced in whole or in part by any means whatsoever and its contents may not be disclosed to any third party without written consent of SALT Foundation (PTY) LTD. No license for rights to manufacture, the equipment or reproduce the documents is given or implied.