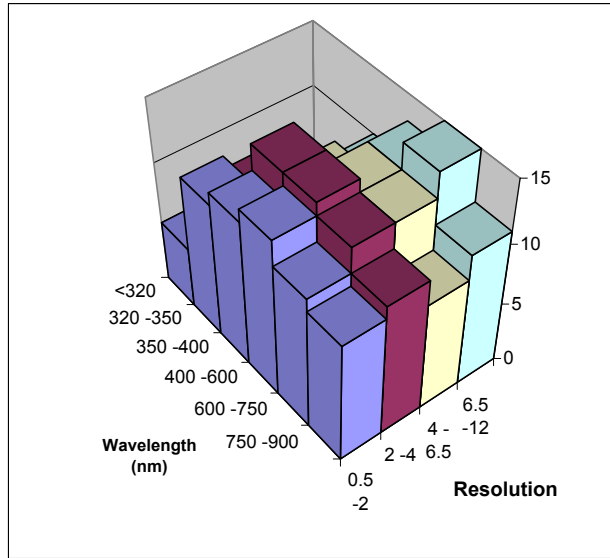


Questionnaire Results

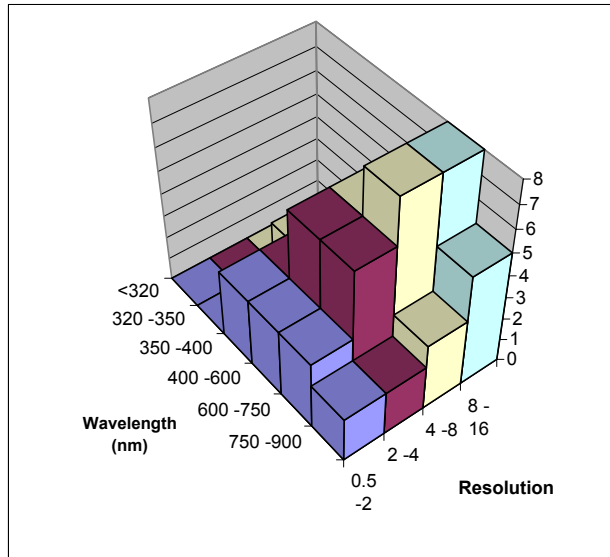
Grating Spectroscopy

	<320	320 -350	350 -400	400 -600	600 -750	750 -900	
0.5 -2	5	11	12	13	11	10	
2 -4	5	10	14	14	13	11	
4 -6.5	2	6	11	13	13	9	
6.5 -12	1	4	10	13	15	11	



Fabry-Perot Spectroscopy

	<320	320 -350	350 -400	400 -600	600 -750	750 -900	
0.5 -2	0	0	3	3	3	2	
2 -4	0	1	3	6	6	2	
4 -8	0	2	4	6	8	3	
8 -16	0	1	4	6	8	5	



Spectropolarimetry

	<320	320 -350	350 -400	400 -600	600 -750	750 -900	
0.5 -2	3	7	6	6	6	6	
2 -4	3	6	6	5	6	5	
4 -6.5	0	0	2	2	4	1	
6.5 -12	0	0	3	5	7	2	

