

PFIS Commissioning, Shared Risk, and Transition to Operations

May 17, 2004

SSWG - PFIS Shared Risk

1

Main PFIS Commissioning Steps

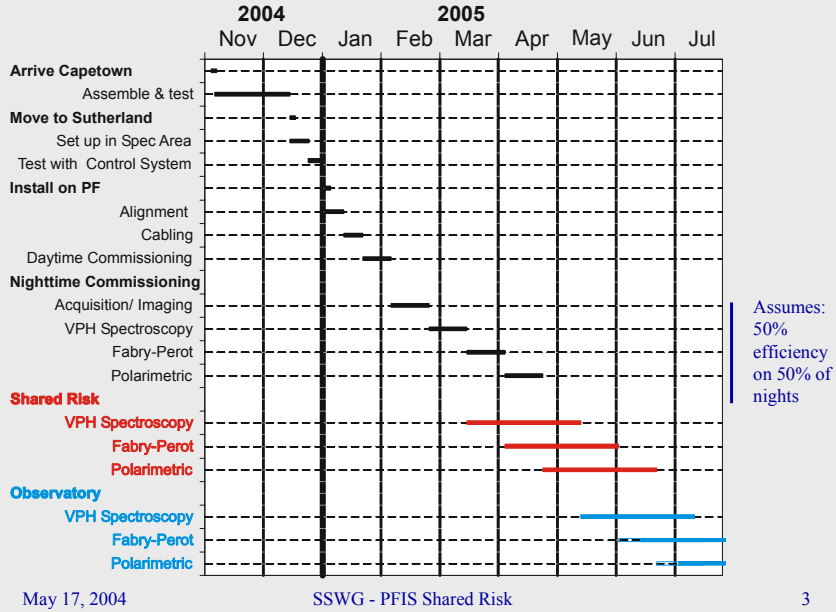
- Setup/ Test on delivery to SAAO
- Setup/ Test in spectrograph room on delivery to Sutherland
- Mount on tracker and integrate with telescope
- Day tests on tracker
- Night time commissioning
- Shared risk science as modes commissioned
- Handover to SALT

May 17, 2004

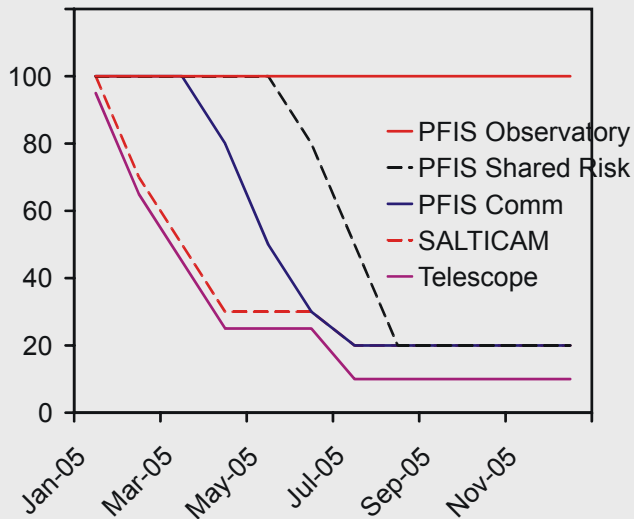
SSWG - PFIS Shared Risk

2

Strawman Schedule



Strawman Time Allocation



How much Time?

- Assume:
 - 75% usable nights
 - efficiency 50% Jan – Jun, 75% Jul – Dec '05
- Want ~10 shared risk programs, ~ 20 tracks each
- Programs will need backup targets in case of slips

	Nights
Telescope	42
SALTICAM	14
PFIS Comm	17
PFIS shared risk	19
PFIS Observatory	78

Shared Risk Science Priorities

- Shared risk science tied to specific PFIS modes and is proposed to SALT in advance of commissioning
- Priorities
 - User commissioned modes
 - Demonstrate Observatory strengths, eg TOO, synoptic
 - Immediately publishable; visible
- Programs to be executed prioritized by Director in consultation with PFIS PI to meet goals of verifying PFIS capabilities and demonstrating early science from SALT

Shared Risk Science

- Shared risk science carries responsibility to promptly reduce data and when possible to contribute to development of data reduction and analysis tools for SALT
- Shared risk users are expected to write up short reports on their experience for posting on the web as background for SALT consortium members
- Published shared risk data will include commissioning and instrument team members deemed appropriate by the Project Director and PFIS PIs.

Schedule/ Process

- Pre-Proposal submitted to Telescope Scientist: this Summer?
 - Usable Telescope/ PFIS tools by end of summer?
 - Phase I proposals to be discussed at one-day meeting after next SSWG
 - Phase II proposals due end of year
 - Proposals test for the first time the observatory proposal process -> queue
 - Role of TAC's?
-